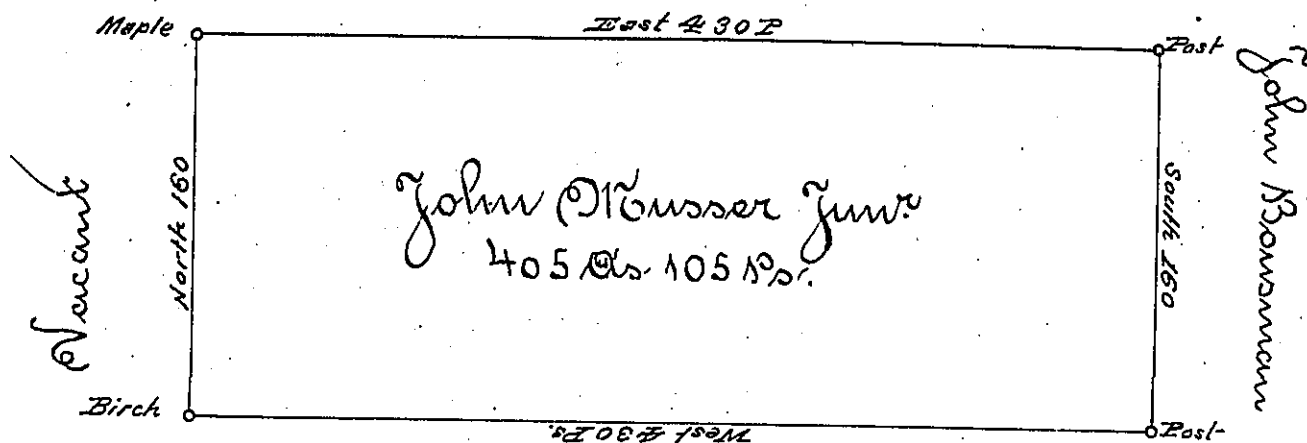


John Breckbell



John Bear

Situated on the waters of Two Lick Creek including some Springs, in Wheatfield Township Westmoreland County, containing 405 acres and 105 perches and Six Cent for Roads &c. Surveyed for John Nusser Junr - the 22^d day of Novem 1794 on warrant dated the 3^d day of May 1793 -

To Daniel Broadhead Esq D. G.

James Ross D. D.

IN TESTIMONY that the above is a copy of the original remaining on file in the Department of Internal Affairs of Pennsylvania, made conformably to an Act of Assembly approved the 16th day of February, 1833, I have hereunto set my Hand and caused the Seal of said Department to be affixed at Harrisburg, this

first day of August 1894

W. J. Stewart
Secretary of Internal Affairs